

Using Kaiku Health is simple



Eleanor Example
Eleanor@example.com



username: **eleanor@example.com**
password: *********

1 Register.

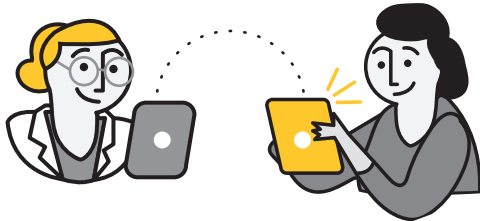
Your nurse will add you to the service and you will receive clear instructions by email.

2

Sign in to the service with your personal username and password

So as not to forget the login website, we recommend you save it on all your devices:

<https://kaiku.docrates.com/en>



3

Once you are signed in you will find your tailored symptom tracking prepared by your care team.

You can report any symptoms and concerns you may experience during the treatment. You will receive instructions on how to manage your symptoms.



Eleanor Example
"I already feel better!"

4

The care team is notified of all symptoms reported by you and therefore remains well informed on your state of well-being.

This allows us to provide you with care specific to your needs.

In the case of emergencies, please contact your care team via telephone.

Ask your care team to find out more about Kaiku Health.